



January 18, 2018



Overview

1. Review the PHES PPR 17 Reporting
 - a. Reporting status and Feedback
 - b. Feedback from IPs
2. Preview PHES for PPR 18 Reporting
 - a. Program Areas
 - b. Reporting Guidelines: Targets, Narrative and Performance Reporting
3. PHES Training
 - a. Hierarchy and program
 - b. Data Sets
 - c. Data Entry and Analytics
 - d. User Management
 - e. Enhancements
 - f. Online Learning

Reporting Status (FY17)

Service Delivery Partners (Non-HIV)

ACTIVE

1. Afya Pwani
2. Afya Timiza
3. Afya Uzazi
4. Afya Jijini
5. APHIAplus Central – Eastern
6. FHI 360 - Nutrition and HIV Program
7. Kenya Supply Chain Systems Strengthening
8. Maternal Child and Survival Programme
9. Population Services International(PS Kenya)

CLOSED

1. AMPATH Plus
2. APHIAplus Nyanza – Western

HSS Partners

1. HIGDA
2. HealthIT
3. HRH Kenya
4. Health Policy Plus
5. County Measurements Learning and Accountability Program(Tupime Kaunti)
6. Population Reference Bureau (PACE)

Partner Reporting FY 17

Mechanisms	Total Reports
Afya Pwani	202
AFYA TIMIZA	606
Afya Uzazi	1066
AfyaJijini	739
AMPATH Plus	175
APHIAplus Central and Eastern	56
APHIAplus Nyanza and Western	129
County Measurements Learning and Accountability Program	67
FHI360 - Nutrition and HIV Program	216
HEALTH INFORMATICS, GOVERNANCE AND DATA ANALYTICS	5
Health Policy Plus	1
HealthIT	1
HRH Kenya Mechanism	133
Kenya Supply Chain Systems Strengthening	91
Maternal Child and Survival Programme	2380
Population Reference Bureau (PACE)	1
Population Services International	2194
Grand Total	8064

Data Set Reporting

Data Sets	Qtr1	Qtr2	Qtr3	Qtr4	Grand Total
County Performance	45	68	86	58	257
Family Planning and Reproductive Health Narrative(National)			4	7	11
Family Planning and Reproductive Health Target(County)				33	33
Malaria Narrative(National)			1	2	3
Malaria Target(County)				34	34
Maternal and Child Health Narrative(National)			3	5	8
Maternal and Child Health Performance(Facility)	531	1184	1053	1129	3897
Maternal and Child Health Target(County)				15	15
Narratives	1		6		8
National Performance		3	3	2	8
Non-Service Delivery Narrative				7	7
Nutrition Narratives (National) (v2)			2	5	7
Nutrition Performance (Facility) (v2)		150	875	937	1962
Nutrition Performance(Facility)(v1)	1				1
Nutrition Target (County) (v2)				1	1
Nutrition Target(County)(v1)				12	12
Sub-County Performance	215	225	242	238	920
Training Narrative(National)			2	6	8
Training Performance(Sub-County)	100	237	107	306	750
Training Target (County)				6	6
WASH Narrative (National) (v2)			1	3	4
WASH Performance (Ward) (v2)			13	6	19
WASH Performance(Ward)(v1)	85	3			88
WASH Target (County) (v2)				2	2
WASH Target(County) (v1)				3	3
Grand Total	978	1870	2398	2817	8064

IPSL

Mechanism Name	Total Facilities
Afya Pwani	76
AFYA TIMIZA	146
Afya Uzazi	186
AfyaJijini	238
APHIAplus Central & Eastern	318
FHI360 - Nutrition and HIV Program	855
Maternal Child and Survival Programme	382
Population Services International	386
Grand Total	2587

Support

Support Category	Ticket Status-Closed	Open	Total
Data Entry	32	1	33
General Support	15	2	17
IPSL	12		12
Reports	7		7
User Account Creation	50		50
Grand Total	116	3	119

Issues

Support Issues

- IPSL
 - ◆ Overlapping facilities
 - ◆ Actual Facilities
- Data Entry
- Data Approval
- User Management

Partner Feedback Session

PHES for PPR 18 Reporting

Program Areas

- MNCH
- Nutrition
- FPRH
- Malaria
- WASH

Reporting Guidelines

Datasets

- Performance
 - Reported Quarterly
 - Target
 - Reported Annually
 - Narratives
 - Reported Quarterly
-



JPHES Portal Live



JPHES Support

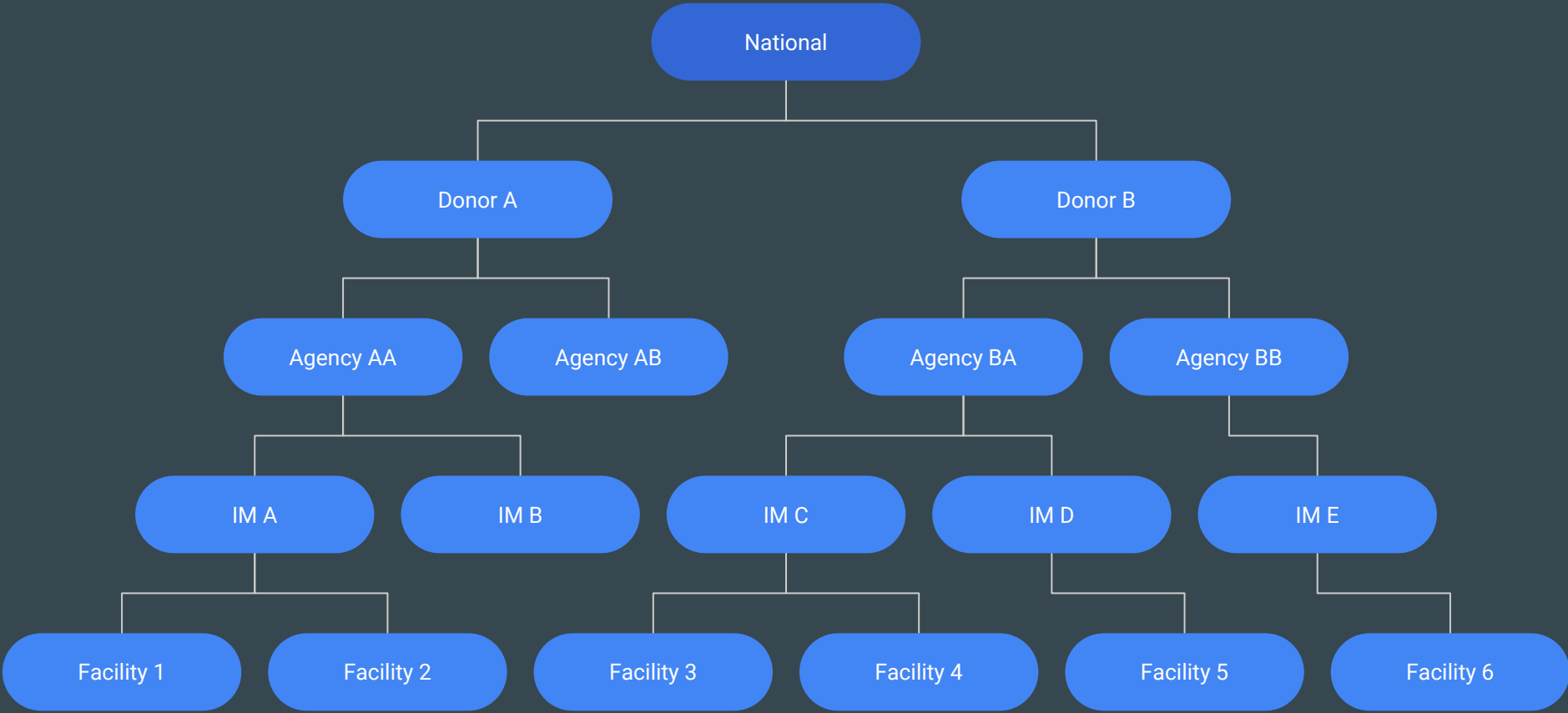


JPHES Training Land



*Documentations &
Manuals*

JPHES.UONBI.AC.KE



Hierarchy

Ahsante

